

Super Floss Information Sheet

Super Floss can be used to do the following:

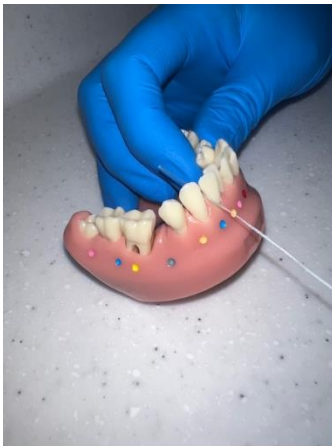
1. Clean around a fixed brace appliances.
2. Clean around a bridge.
3. Clean around a fixed retainer.
4. Clean around an implant.
5. Clean in wider spaces.



Super Floss has three unique components in which allows us to clean around these fixed appliances effectively. These are:

1. A stiffened end to the floss.
2. A thicker, spongy floss section.
3. Regular floss end.

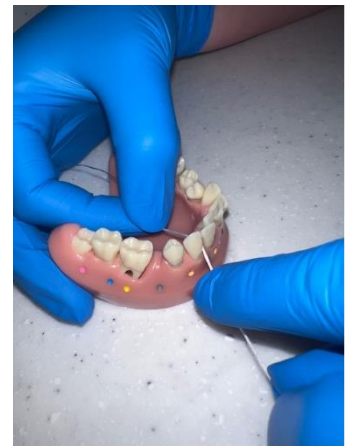
Please see below an example of how to use the Super Floss:



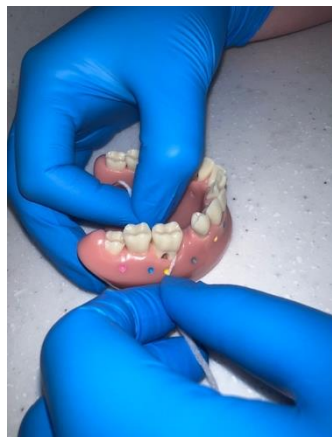
Firstly, thread the stiffened end of the floss through the gap between the teeth.



Secondly, pull the floss through to the thicker, spongy floss section.



Then, hold the floss tighter in a 'C' shape around each side of the tooth and guide just under the gum line. Finally just pull the floss back through the gap.



You can use the same technique for wider spaces .